



# AMIM & the Shipbuilding & Ship Repair (SBSR) Industry in Malaysia

**Adren Siow**  
**President**  
**Association of Marine Industries of Malaysia (AMIM)**

# PRESENTATION OUTLINE

- **About Us**
- **Global & Local Landscape**
- **Malaysian Outlook**
- **Shipyards in Malaysia**
- **Market Potential**

# ABOUT AMIM



*A Safe Harbour for the Industry*

## BACKGROUND

1984



Association of Shipbuilders and Repairers of Malaysia (ASROM) established.

1997



Changed to Association of Marine Industries of Malaysia (AMIM) to encompass the more Marine Industry players comprises shipbuilding, ship repair and marine-related players.

2025



**165 Members**, comprising of the following categories:

- Shipyards
- Marine Equipment Manufacturers
- Maintenance, Repair & Overhaul Entities
- Marine Design Services
- Classification Societies
- Academia
- Marine Support Services

## FOCUS AREAS



Development of SBSR & marine related industry



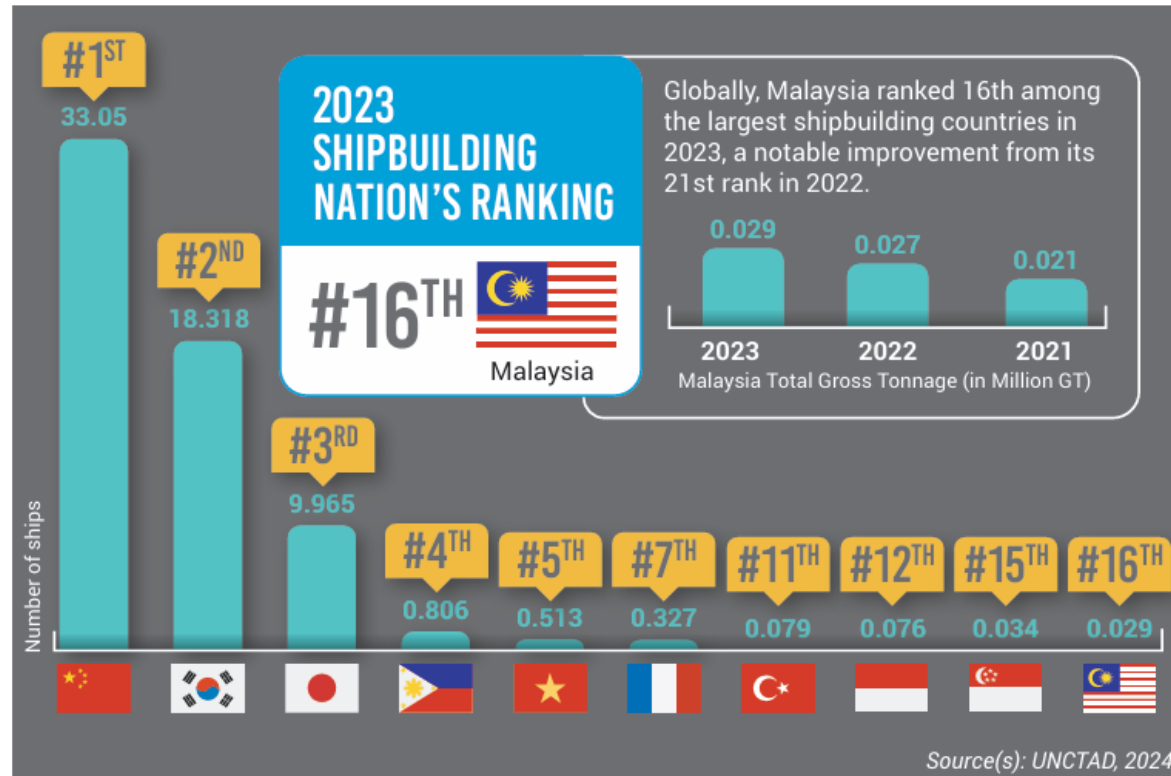
Continuous technology & sustainability improvement of maritime & industry standards



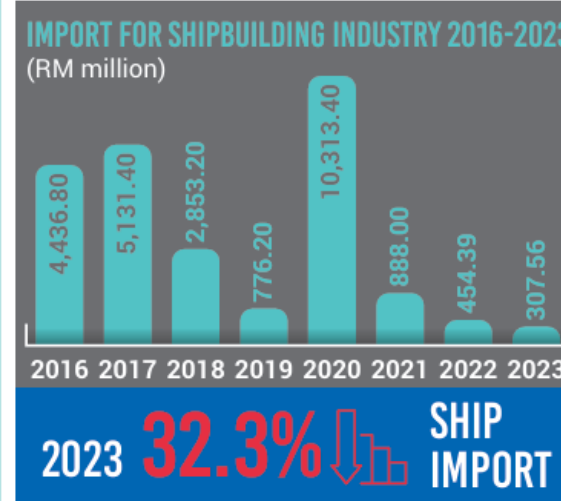
Bridge between SBSR industry & the government and relevant stakeholders – recognized Industry Lead Body (ILB) by the Government

## GLOBAL RANK

Malaysia's shipbuilding output has significantly improved, highlighting its growing prominence in the global maritime industry.



## INDUSTRY IMPORT & EXPORT



### Highest import countries for Malaysian Shipbuilding Industry, 2023

In 2023, Malaysia saw a significant 32.3% decrease in ship imports, falling to RM307.56 million from RM454.39 million in 2022. The main items imported include rafts, tanks, coffer-dams, landing stages, buoys, and beacons. Notably, Singapore, China, Mexico, and the Republic of Korea were the leading source countries for these imports.



### Highest export countries for Malaysian Shipbuilding Industry, 2023

In 2023, Malaysia saw a remarkable 31.5% increase in ship exports, reaching RM939.03 million, up from RM713.74 million in 2022. The primary exports include tugs and pusher craft, with Indonesia, Singapore, Australia, and the United Arab Emirates (UAE) being the leading export destinations.

# Malaysian Shipyards Capacity & Capability



**Small Vessel Building  
(Up to 30m)**

- Steel, Aluminum and Composite Boat Building
- Competitive in the Global Market.
- Newbuilding for Government Agencies, Leisure Market, Fishing Boats, Miscellaneous Marine Support Vessels Market.



**Medium Vessel Building  
(30m to 150m)**

- Steel & Aluminium Shipbuilding
- Competitive in the Global Market
- Oil & Gas Support Vessels such as Utility Tug, Crew boats, Seismic Support Vessel, AHT, AHTS, PSV, Pipelay Barge, Accommodation Barge etc.
- Shipping/Merchant Vessels such as Tug, Barges, Landing Craft, Container Vessels, General Cargo Vessel, Cement Carrier, Tankers etc.
- Government Agencies Vessels such as Research Vessels, Survey Vessels, Patrol Boats, Patrol Vessels and Littoral Combat Ships.



**Large Vessel Building  
(Above 150m)**

- Competitiveness eroded over the years with China, Korea, Japan being the leaders in this segment.
- MMHE's strategy to focus in the O&G, repairs and conversion leaving no Large Shipbuilder in Malaysia.

Malaysia's core strength in the SBSR industry lies in the design & construction of **small and medium-sized vessels**, up to 150 metres in length, a niche where our shipyards truly excel.



**Tug boat &  
Pusher craft**



**Yachts & pleasure /  
sport vessel**



**Floating structures**

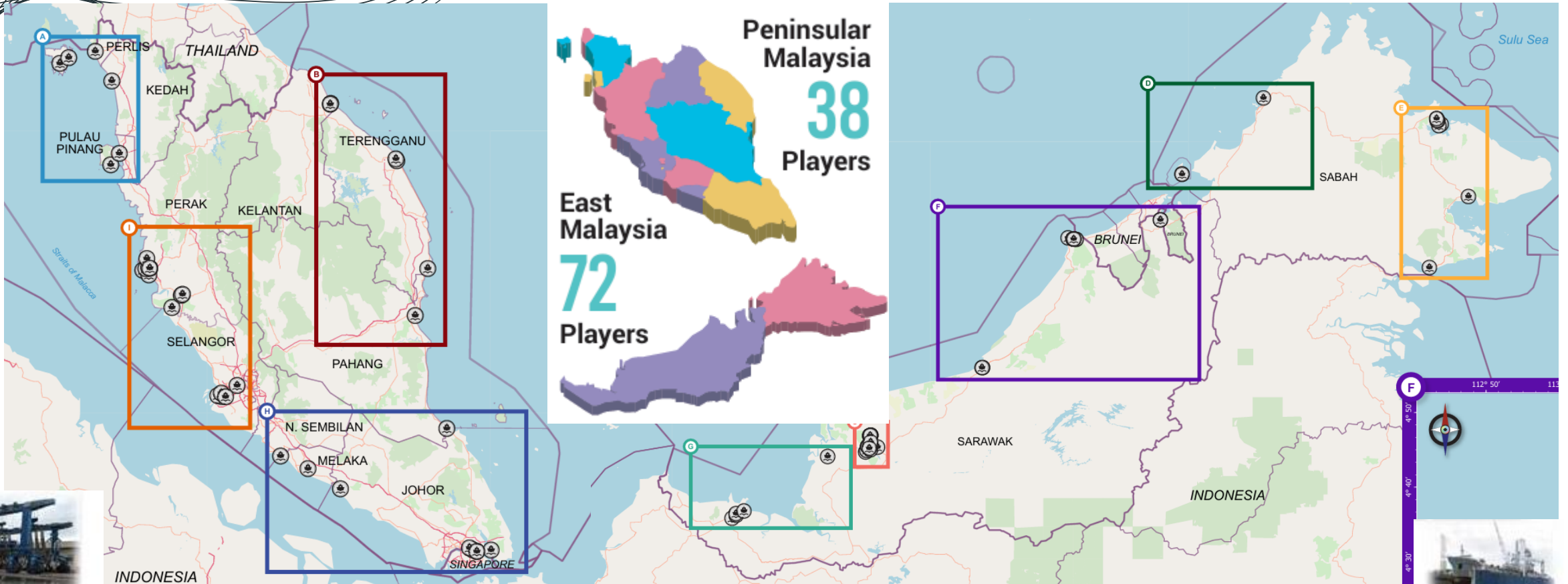


**Cruise ship, cargo  
ship, barges**



**Light vessels**

# Shipyards Distribution in Malaysia



### Largest slipways:

**4,250 DWT + 3,000 DWT + 500 DWT**

Nam Cheong Dockyard Sdn Bhd  
Ship size: 85Mx40M, 85Mx40M, 47Mx12M

### Largest Dry Dock:

**450,000 DWT + 400,000 DWT + 140,000 DWT**

Malaysia Marine and Heavy Engineering Sdn Bhd  
Dock: 385Mx80M, 350Mx80M, 270Mx46M

### Largest Floating Dock:

**13,500 DWT + 2,500 DWT**

Shin Yang Shipyard Sdn Bhd  
Berth: 160Mx48.1M, 54.864Mx23.008M

### Largest Synchro Lift:

**50,000 DWT**

Malaysia Marine and Heavy Engineering Sdn Bhd  
Berth: Length 188m, Width: 33.8m

### Largest Goliath Crane:

**600 tonne**

Malaysia Marine and Heavy Engineering Sdn Bhd

### Largest Travel Lift:

**700 tonne**

Grade One Marine Shipyard Sdn Bhd

### Largest Rubber Tyred Gantry Crane:

**300 tonne**

Lumut Naval Shipyard Sdn Bhd



# Thank You !

Stay in touch with AMIM ....



+603 7887 1077  
+6013 313 5069



amim.secgen@gmail.com  
amim69@amim.org.my